
1. PREREQUISITES	3
2. INSTALLATION	3
1. MySQL INSTALLATION	3
2. ECLIPSE PLUGIN INSTALLATION	5
3. USAGE	5
1. TAO SUITE SCENARIOS	5
A. CLASSIFY LEGACY DATA	5
B. ONTOLOGY GENERATION	5
C. CONTENT AUGMENTATION	5
D. CREATION OF SWS DESCRIPTIONS	5
2. TAO SUITE NAVIGATOR	5
4. KNOW BUGS	6
5. TODO	6
6. CHANGELOG	6

1. PREREQUISITES

- Eclipse installation 3.x
- MySQL 5.x

At this moment of development, we have decided to use a MySQL database to store users, projects and their corresponding elements (legacy data). Other possibilities should be evaluated in order to be used for this storage, namely xml files, temporal databases (i.e. hypersonic), a central database, web service, etc.

2. INSTALLATION

The installation process requires some user interaction; this should be removed in future versions.

1. *MySQL INSTALLATION*

The script will create all the required elements on the MySQL instance, including the database. Please, do not modify this script unless you know what to change in the code.

The script can be imported in several ways:

- ✓ Using mysql administrator (Restore > Open backup file)
- ✓ Using mysql query browser (File > New script tab; Load (icon); Execute)
- ✓ Using command line (see the mysql manual)

We **strongly** recommend the first option since it's the easiest.

Figure 1 MySQL Administrator: Restore page

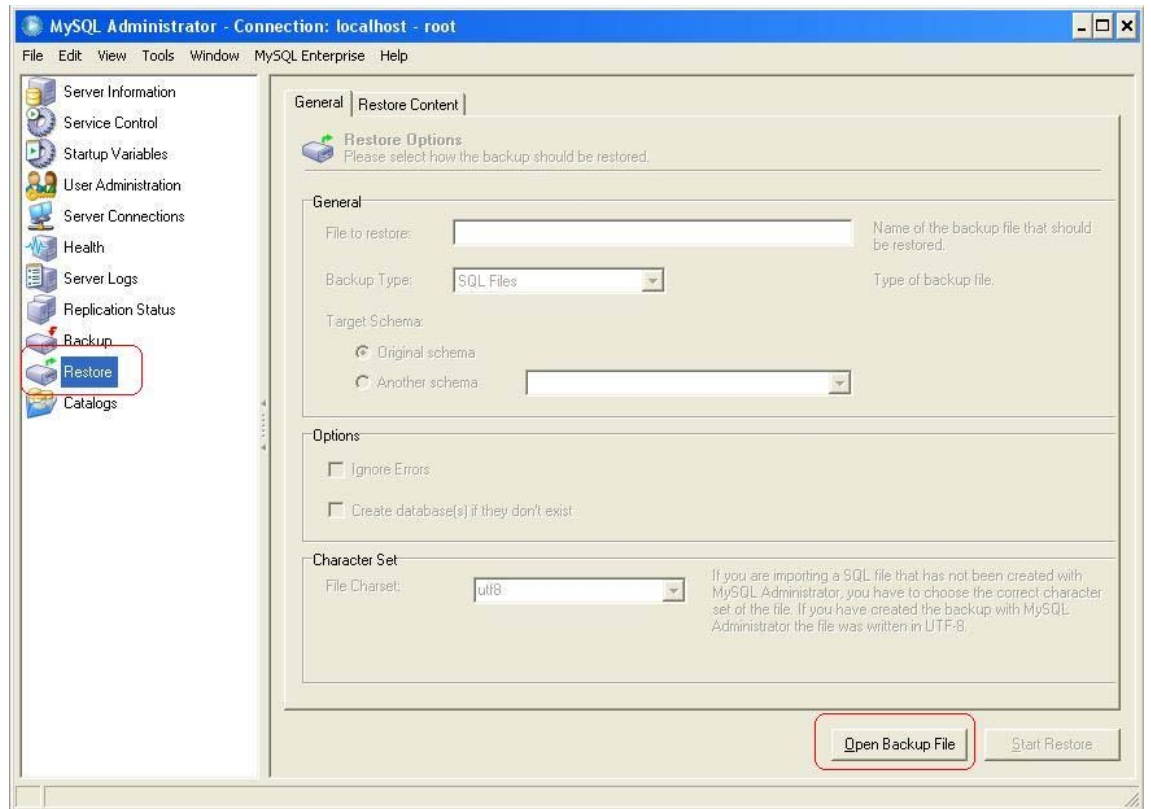
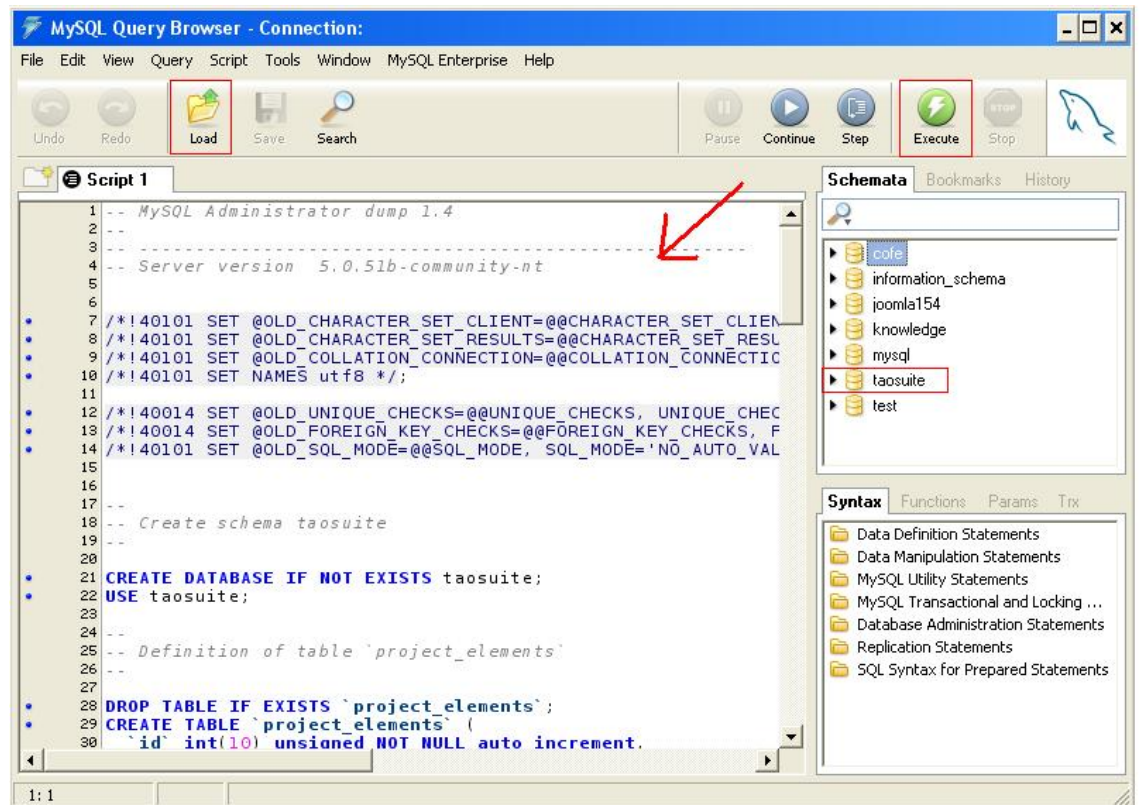


Figure 2 MySQL Query Browser: Load script



2. ECLIPSE PLUGIN INSTALLATION

The plug-in should be installed as any other plug-in. Just copy the jar file to your local plug-in folder, located under eclipse root folder. Then restart the eclipse ide (if opened before) and open the new perspective called TAO.

3. USAGE

The plug-in comes with a sample project already created (sample project 1) and it also has an already created user (*taosuite*, password *taosuite*). Click on Authenticate and the login screen will appear on the right side. Select the created project, write the login information and click on submit. This will refresh the views (boxes on the left side) and you are ready to begin the transition of the selected project.

1. TAO Suite scenarios

a. Classify legacy data

Here you can add the already existing legacy data to the HKS. In this screen you can see to groups:

* HKS connection test: TBD

* Classify legacy data: Here, the process is quite simple and intuitive. Just click on *choose file/folder* and select the file you want to add. Then **select the type associated to the file** (this is mandatory) and click *submit*.

This will add the selected resource to HKS and will update the navigator view (left side, bottom one). If any error happens, a warning window will appear with the information. If this happens, please refer to the log file and submit the information to francisco.calle@atosresearch.eu

b. Ontology generation

TBD

c. Content augmentation

TBD

d. Creation of SWS descriptions

TBD

2. TAO Suite navigator

TBD

4. KNOW BUGS

- Authenticate:
 - user and password in not validated
- Classify legacy data
 - HKS connection test not implemented
 - Folder selection not yet ready

5. TODO

6. CHANGELOG